

RP91



A heavy duty threshold plate with integral sill gasket that can be used in conjunction with Raven door bottom seals on roll-up and tilt up doors.

RP91 has an upstand to prevent water penetration and a ramped section to shed water away.

Location: Door sill.

Finish: Satin clear (silver) anodised aluminium (25µm).

Fixing: Screw fix. Colour matched zinc plated, cross recess head CSK S.T. screws supplied.

Seal: RP404a. Grey flexible PVC.

Sizes: Available in stock lengths.

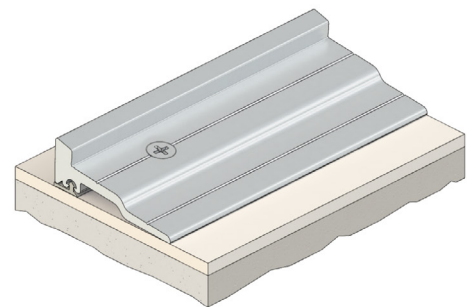
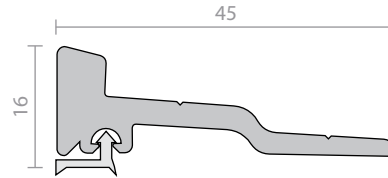
Approvals

Access & Mobility NZ: NZ BC Compliance Doc. D1 Pt. 1.3.2.

Fire AUS/NZ: NCC Spec. C3.4. AS1530.4 & AS/NZS 1905.1. NZ BC Compliance Doc. C/AS1 6.19.2(a) & App. C6.1.1.

UK/EU: Approved Document B. Approved to BS 476 Pt. 20 & 22 (similar to BS EN 1634-1).

FRL & FRR-/240/30.
BAL \leq **FZ** when used with a BAL rated door bottom seal in accordance with AS 3959.



RP95, RP96



Low profile threshold plates that can be used in conjunction with Raven door bottom seals to prevent rain, draught, noise and smoke infiltration.

Location: Door sill.

Finish: Satin clear (silver) or bronze anodised aluminium (25µm).

Fixing: Screw fix or builders adhesive for concealed fixing (user determined). Colour matched zinc plated, cross recess head CSK S.T. screws supplied.

Sizes: Available in stock lengths.

Approvals

Cert. GVI.R37913

Access & Mobility AUS/NZ: NCC D2.15 & D3.3. AS1428.1. NZ BC Compliance Doc. D1/AS1 1.3.2.

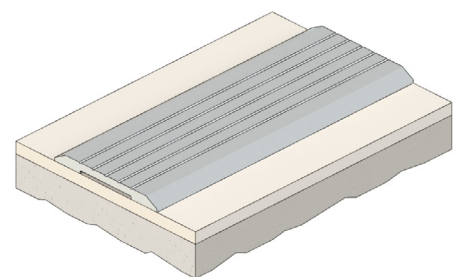
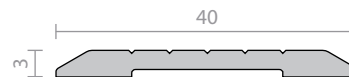
UK/EU: Approved Document M.

Fire AUS/NZ: NCC Spec. C3.4. AS1530.4 & AS/NZS 1905.1. NZ BC Compliance Doc. C/AS1 6.19.2(a) & App. C6.1.1.

UK/EU: Approved Document B. BS 476 Pt. 20 & 22 (similar to BS EN 1634-1).

FRL & FRR-/240/30 and FD240.
BAL \leq **FZ** when used with a BAL rated door bottom seal in accordance with AS 3959.

RP95



RP96

